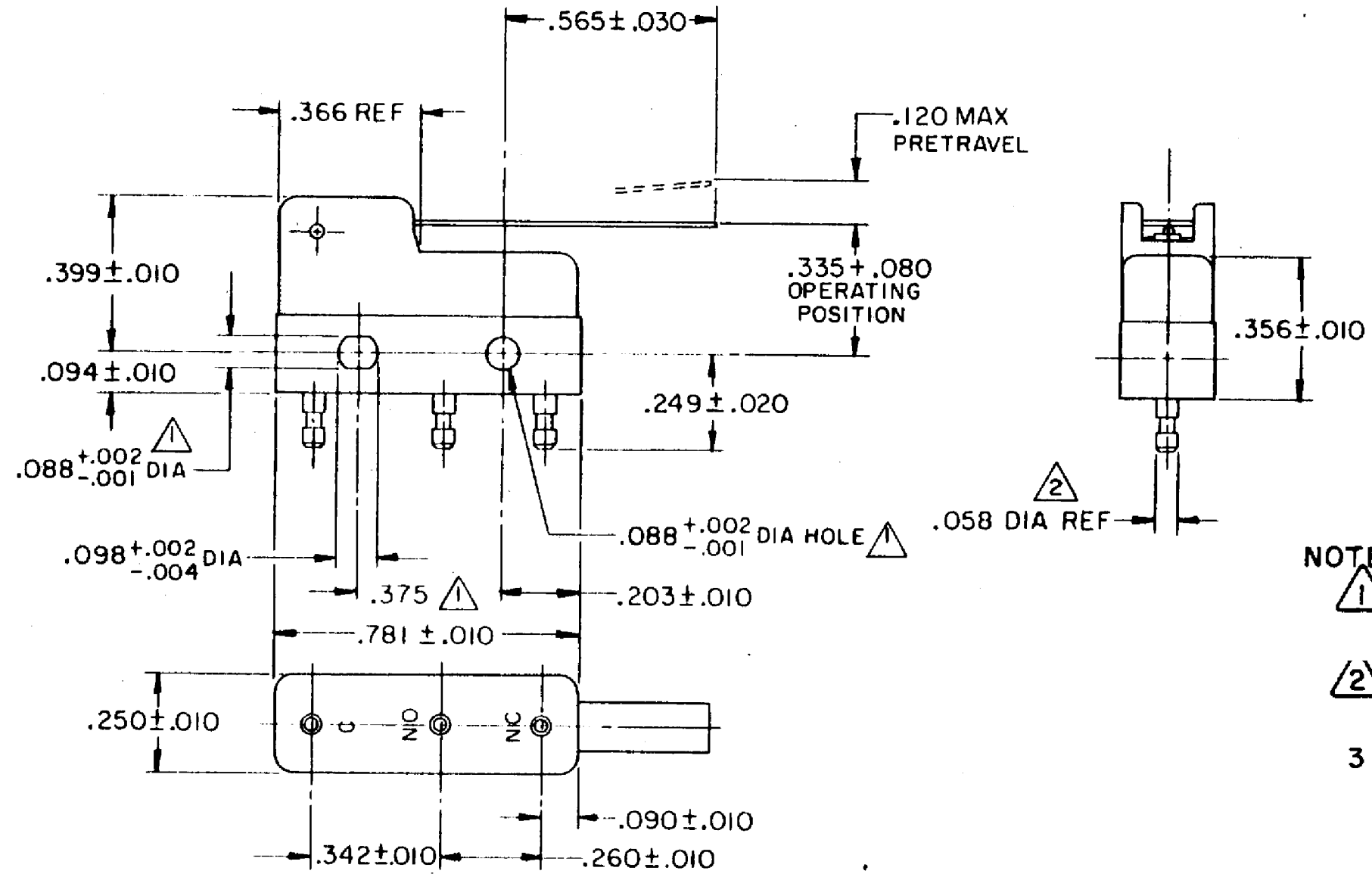
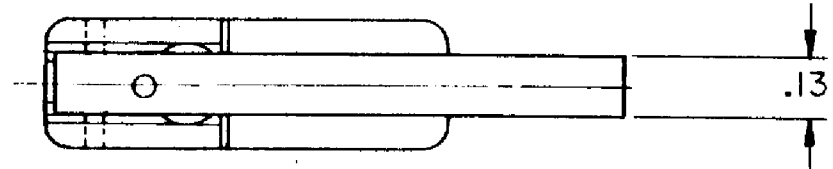


HONEYWELL
PART NUMBER
311SM2-H58
PRODUCT CODE
TZA1138

REV	DOCUMENT	CHANGED BY	CHECK
8	0038113	PRS 12JUN08	BLR



NOTE -
 ① MOUNTING HOLES WILL ACCEPT PINS OR SCREWS OF .087 MAX DIA ON .375 ± .002 CENTERS
 ② PLATED TERMINALS WILL ACCEPT "AMP INC" .058 DIA PIN RECEPTACLES.
 3 - SWITCH WILL WITHSTAND TEMPERATURE OF 250° F

RELEASE NO.	SR - 12940
REPLACES	-

CHARACTERISTICS	
OPERATING FORCE	30 GRAM MAX
RELEASE FORCE	5 GRAM MIN
DIFFERENTIAL TRAVEL	.027 MAX
OVERTRAVEL	.026 MIN

ELECTRICAL DATA		
CONTACT ARRANGEMENT SPDT		
30 VOLTS DC RATING		
	SEA LEVEL	50,000 FT
INDUCTIVE	3 AMP	2.5 AMP
RESISTIVE	5 AMP	5 AMP
MAXIMUM INRUSH 24 AMP		
APPROVALS	KEMA, CE	5A, 250V ~ T85 1E4
	UL, CSA	5A, 250 VAC ~

DESIGN UNITS:	INCH
TOLERANCES UNLESS NOTED:	
NO PLACE	X ±
ONE PLACE	.X ±
TWO PLACE	.XX ±
THREE PLACE	.XXX ±
FOUR PLACE	.XXXX ±
ANGLES	±
THIRD ANGLE PROJECTION	

DRAWN	VK	31 OCT 07
CHECK	RJ	31 OCT 07
THIS DRAWING COVERS A PROPRIETARY ITEM AND IS THE PROPERTY OF HONEYWELL. THIS DRAWING IS NOT TO BE COPIED OR USED WITHOUT THE PERMISSION OF HONEYWELL.		
INTERPRET PER ANSI Y14.5M-1982 OTHER HONEYWELL ENGINEERING STANDARDS MAY APPLY		
RASTER		

Honeywell			
TITLE SWITCH - BASIC			
SIZE	TYPE	DRAWING NAME	REV
B	I	311SM2-H58	8
SCALE	-	WEIGHT .006 LB	SHEET 1 OF 1